

User Guide

Application TC-10 LAN

Advitronics Telecom B.V.
Grave, September 2009

User Guide

Application TC-10 LAN

Copyrights Copyright © 2009 by Advitronics Telecom B.V. All rights reserved.

Company Advitronics Telecom B.V.
Industriestraat 2
5361 EA Grave
Tel.: 0486-476263

E-mail: info@advitronics.nl
Web: www.advitronics.nl

Place and date Grave, September 2009

The copyright and intellectual property rights of this software and all its documentation, including this Install Guide file, are owned by Advitronics Telecom B.V. All of this is protected by copyright laws and international intellectual property right treaties. You may not copy any portion of the software or documentation in any form, except to use this software in accordance with the terms of the agreement. The software or documentation may only be copied to make one copy for backup purposes.

You may not alter the software in any way. If copies of the documentation must be made, you should make them in printed form only.

Table of Contents

	Page
Welcome	4
Installation	5
Product Overview	7
Configuration Settings	7
File Menu	8
New File	8
Open a File	8
Save a File	8
Save As a File	9
Exit	9
Edit Menu	9
Preferences	9
Communication Menu	10
Communication Settings	10
Check data TC-10 LAN	11
Change data TC-10 LAN	11
Help Menu	12
Help Contents	12
About	12
Buttons	13
Contact 1 – 10	13
Check status	13
Change status	13
Preferences	13
Communication	13
Toolbar Buttons	13
New File	13
Open File	13
Save File	13
Save As File	13
Status Bar	14
Statusbar	14
Support	15
Copyright	16

Welcome

Congratulations on becoming an owner of an TC-10 LAN. You made an excellent choice and we hope you will enjoy all its capabilities.

The TC-10 LAN that offers a rich set of functionality at ultra-affordable price. This User Guide helps you with the usage of the application of the TC-10 LAN.

Safety Compliances

The TC-10 LAN complies with CE and various safety standards. Only use the universal power adapter provided with the TC-10 LAN package. The manufacturer's warranty does not cover damages to the TC-10 LAN caused by unsupported power adaptors.

Installation

Equipment Packaging

The TC-10 LAN package contains:

- 1 TC-10 LAN
- 1 220VAC / 12VDC Power Adaptor
- 1 Installation CD

Connecting your TC-10 LAN

The TC-10 LAN is easy to install and to configure. The TC-10 LAN is designed to work as telecontroller and to switch some relays at distance. The following figure illustrates the connections of the TC-10 LAN.

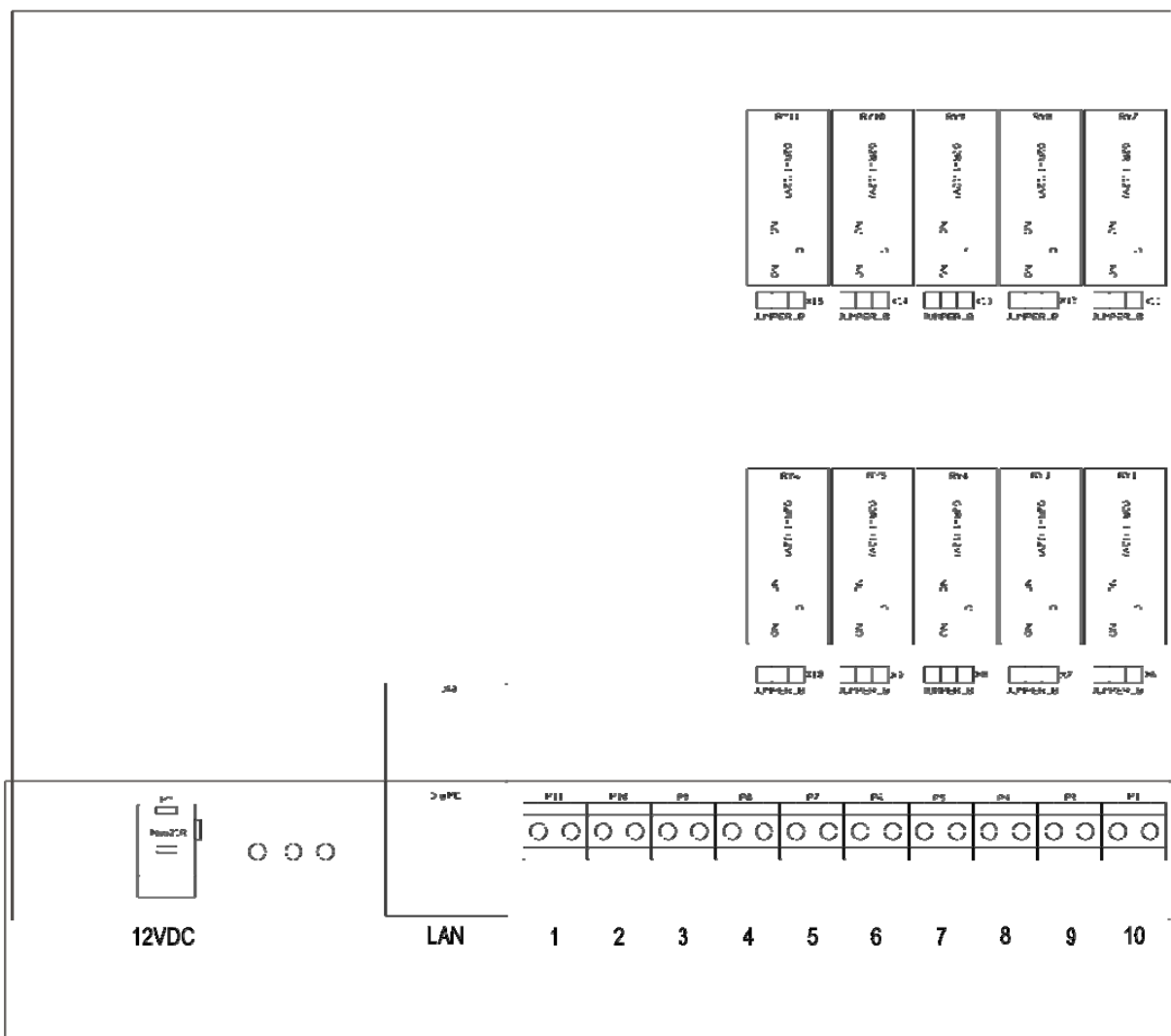


Figure 1: The connections of the TC-10 LAN.

The following table shows the information for all connections from left to right.

Connection	Description
1	12 VDC power adapter
2	Ethernet / LAN connector
3	Relay 1
4	Relay 2
5	Relay 3
6	Relay 4
7	Relay 5
8	Relay 6
9	Relay 7
10	Relay 8
11	Relay 9
12	Relay 10
13	NO / NC jumper for relay 1
14	NO / NC jumper for relay 2
15	NO / NC jumper for relay 3
16	NO / NC jumper for relay 4
17	NO / NC jumper for relay 5
18	NO / NC jumper for relay 6
19	NO / NC jumper for relay 7
20	NO / NC jumper for relay 8
21	NO / NC jumper for relay 9
22	NO / NC jumper for relay 10

Two easy steps to install the TC-10 LAN

1. Connect the TC-10 LAN to a LAN network with an Ethernet cable to your PC.
2. Insert the power adapter into the TC-10 LAN and connect it to a wall outlet.

Product Overview

With the TC-10 LAN you can remote 10 relays via LAN. The PC application is used to adjust and programming all possible settings of the TC-10 LAN.

Configuration Settings

With the main window of the TC-10 LAN application you can control all of it's settings and properties. Below (figure 2) you can see the main window of the PC application of the TC-10 LAN.

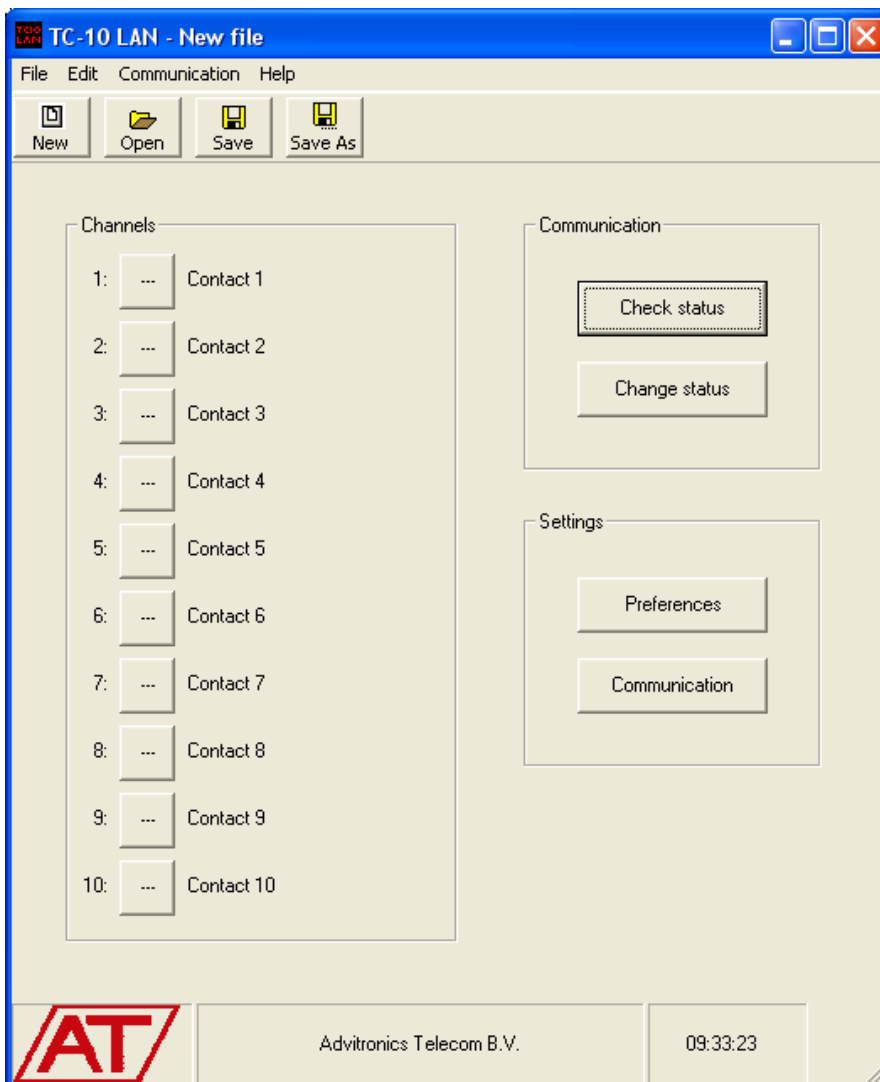


Figure 2: Main dialog window of the TC-10 LAN.

In this main window you can choose for several commands:

Menu Commands

File Menu

New File

Open a File

Save a File

- Save As a File
- Exit
- Edit Menu
 - Preferences
- Communication Menu
 - Communication settings
 - Check status TC-10 LAN
 - Change status TC-10 LAN
- Help Menu
 - Help Contents
 - About

Buttons

- Contact 1 – 10
- Check status
- Change status
- Preferences
- Communication

Toolbar Buttons

- New File
- Open File
- Save File
- Save As File

Status bar

- Status bar

Support

Copyright

File Menu

New File

Use this command to create a new document in the TC-10 LAN program. You can open an new document with the New command in the Menu, the New button on the Toolbar or with CTRL + N shortcut key.

Open File

Use this command to open an existing document in a new window. When you choose this option the TC-10 LAN displays a File Open Dialog Box so you can search for your document. You can open an existing document with the Open command in the Menu, the Open button on the Toolbar or with CTRL + O shortcut key.

Save A File

Use this command to save the active document to its current name and directory. When you save a document for the first time, the TC-10 LAN displays the Save As Dialog so you can name your document. If you want to change the name and

directory of an existing document before you save it, choose the Save As command. You can save an existing document with the Save command in the Menu, the Save button on the Toolbar or with CTRL + S shortcut key.

Save As

Use this command to save and name the active document. The TC-10 LAN displays the Save As Dialog. To save a document with its existing name and directory, use the Save command. You can save a file as with the Save As command in the Menu, the Save As button on the Toolbar.

Exit

Use this command to end your TC-10 LAN session. You can also use the Close command on the application Control menu. The TC-10 LAN prompts you to save documents with unsaved changes.

Edit Menu

Preferences

In this dialog window you can manage all the properties of the 10 relay contacts. Below in figure 3 on the next page you can see the Preferences dialog window of the PC application of the TC-10 LAN.

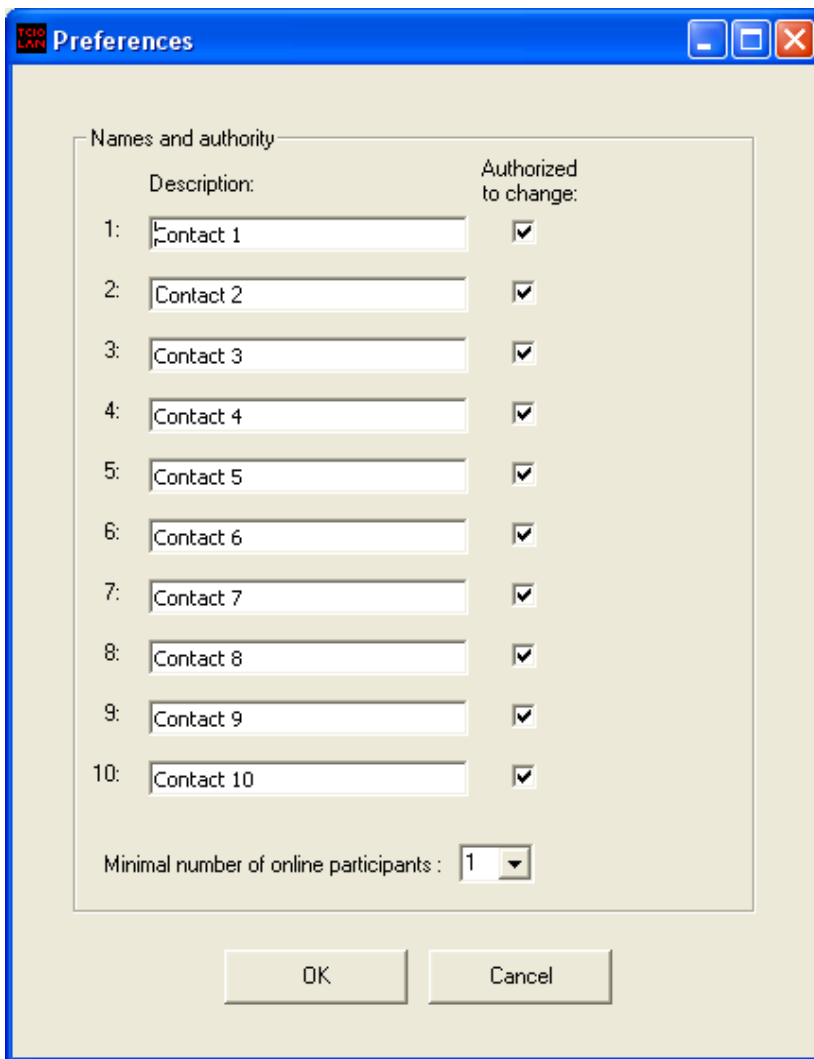


Figure 3: Preferences dialog window of the TC-10 LAN.

In this dialog window you can manage all the 10 contacts names, the authorisation and the minimal number of online participants and save these settings.

To save all the Preferences settings, click on the OK button. Otherwise click Cancel.

Communication Menu

Communication settings

Connect the UTP cable from the TC-10 LAN to a free network port on the network. When this is done, the TC-10 LAN needs a minute to get a free IP address (DHCP) from the network. Give in the IP address, Port 1, Port 2, Username and Password and press on the OK button. You can also push on the "Search IP-address" button to search the TC-10 LAN IP Address. Port 1 (**80**) and Port 2 (**2101**) are the standard values for the communication for the TC-10 LAN. These Ports can be used for port forwarding when the TC-10 LAN is behind a public IP address in a local network. Two public ports should be forwarded to local port 80 and 2101 of the IP address of the TC-10 LAN. Third party firewalls on your PC or laptop may block the search for the TC-10 LAN IP address.

The standard Username is **tc10lan** and Password is **123456**. Then it is possible to communicate with the TC-10 LAN.

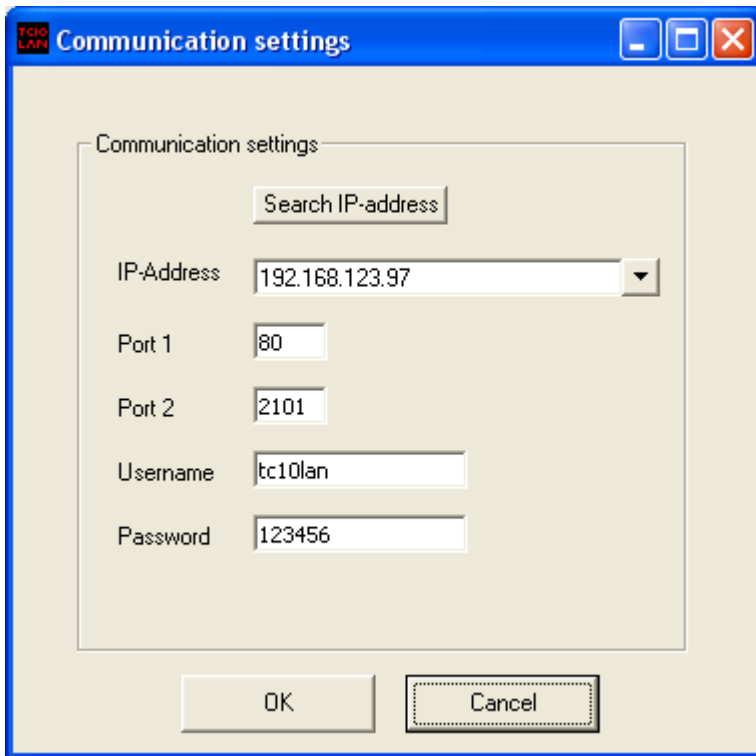


Figure 4: The communication settings of the TC-10 LAN.

Check status TC-10 LAN

Use this command to check the status from the TC-10 LAN.

At first you must connect the LAN cable from the TC-10 LAN to a free LAN port on the network. After that you must search the TC-10 LAN with the search button or fill in an IP address of the TC-10 LAN. Then you are ready to check the status.

Change status TC-10 LAN

At first you must connect the LAN cable from the TC-10 LAN to a free LAN port on the network. After that you must search the TC-10 LAN with the search button or fill in an IP address of the TC-10 LAN. Then you are ready to change the status.

When you try to change the status of the TC-10 LAN the PC application firstly check the actual status of the contacts of the TC-10 LAN. See message box in figure 5.

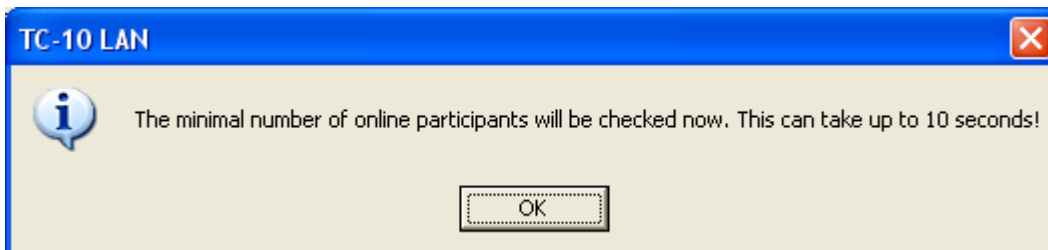


Figure 5: Check status of the actual status of the contacts dialog window.

If the minimal number of the online participants are checked and if there are enough online participants the TC-10 LAN will be programmed. See figure 6 for the announcement.

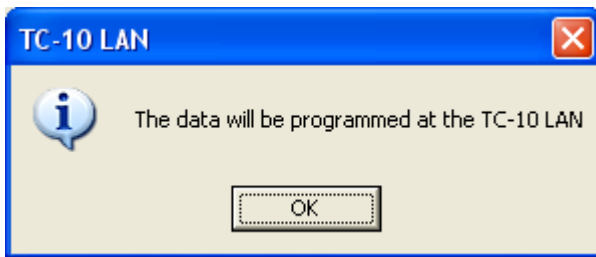


Figure 6: The programming announcement dialog window.

If there are not enough online participants of the TC-10 LAN then the following message box will be showed, see figure 7. Then the TC-10 LAN will not be programmed and you must changed the settings of the contacts or the minimal number of online participants.

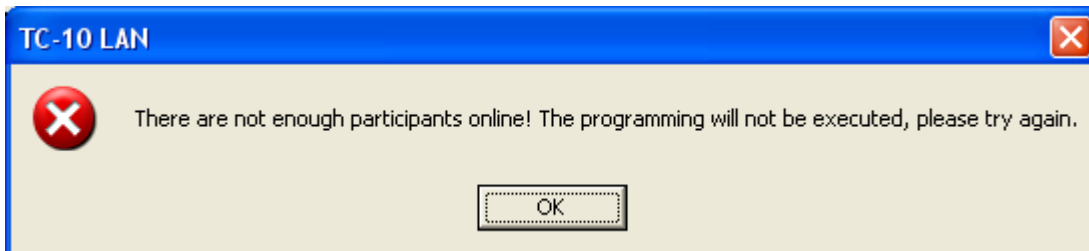


Figure 7: The programming error announcement dialog window.

Help Menu

Help Contents

Use this command to display the opening screen of Help. From the opening screen, you can jump to step-by-step instructions for using TC-10 LAN and various types of reference information. Once you open Help, you can click the Contents button whenever you want to return to the opening screen.

About

Use this command to display the copyright notice and version number of your copy of the TC-10 LAN program. Below in figure 8 you can see the About dialog window of the PC application of the TC-10 LAN.

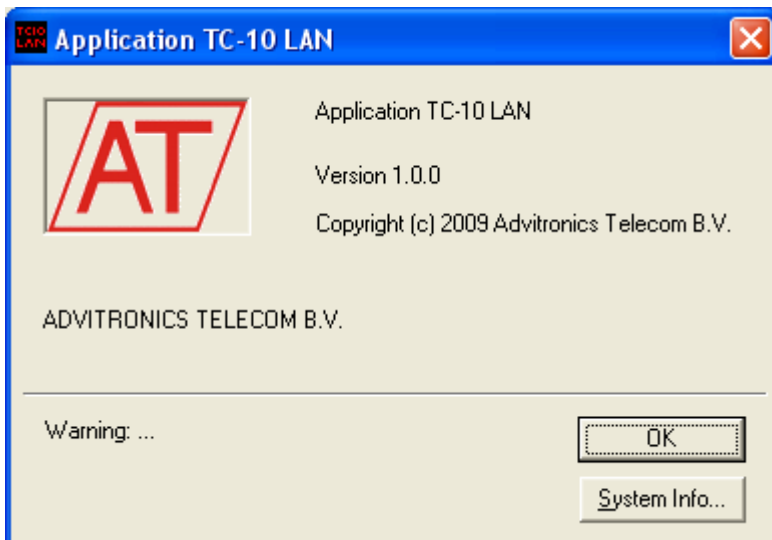


Figure 8: About dialog window of the TC-10 LAN.

Buttons

Contact 1 – 10

In the main dialog you can manage the 10 relay contacts to on or off.

Check status

See the Communication Menu paragraph for more information.

Change status

See the Communication Menu paragraph for more information.

Preferences

See the Edit Menu paragraph for more information.

Communication

See the Communication Menu paragraph for more information.

Toolbar Buttons

New File

See the File Menu paragraph for more information.

Open File

See the File Menu paragraph for more information.

Save File

See the File Menu paragraph for more information.

Save As File

See the File Menu paragraph for more information.

Status bar

The status bar is displayed at the bottom of the TC-10 LAN window. Below in figure 9 you can see the Statusbar of the PC application of the TC-10 LAN.



Figure 9: Status Bar window of the TC-10 LAN.

The left area of the status bar reflects the Advitronics Telecom B.V. logo. The Middle area shows the company name of the developer of the TC-10 LAN application. The right area shows a real-time clock.

Support

You can consult www.advitronics.nl 24-hours-a-day to find the latest product information, product updates, and answers to common questions.

For technical support contact us directly at:

Advitronics Telecom B.V.

Postbus 11

5360 AA Grave

Industriestraat 2

5361 EA Grave

Tel: +31 (0)486-476263

Fax: +31 (0)486-476540

E-mail: info@advitronics.nl

Copyright

The copyright and intellectual property rights of this software and all its documentation, including this online help system, are owned by Advitronics Telecom B.V. All of this is protected by copyright laws and international intellectual property right treaties. You may not copy any portion of the software or documentation in any form, except to use this software in accordance with the terms of the agreement. The software or documentation may only be copied to make one copy for backup purposes. You may not alter the software in any way. If copies of the documentation must be made, you should make them in printed form only.

Copyright © Advitronics Telecom B.V.

Copyright © 2009 by Advitronics Telecom B.V. All rights reserved

Advitronics Telecom B.V.
Postbus 11
5360 AA Grave
Industriestraat 2
5361 EA Grave
Tel: +31 (0)486 476263
Fax: +31 (0)486 476540
E-mail: info@Advitronics.nl
[http://www. Advitronics.nl](http://www.Advitronics.nl)